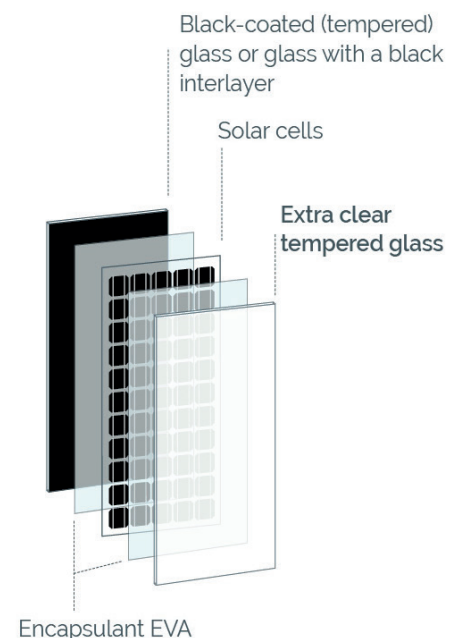
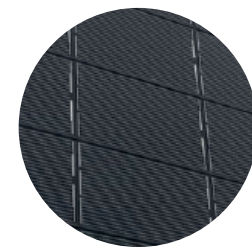


A deep black façade with maximum solar efficiency? ISSOL® NOCTIS merges advanced photovoltaic technology with a fully opaque black finish, delivering a striking uniform aesthetic. Like conventional panels, its solar cells are not concealed behind paint, ensuring 100% efficiency. Ideal for cladding, spandrels and balustrades in both new builds and renovations, with an optional reflective finish for added visual impact.

Technical Specifications

		ISSOL® Noctis
Composition	Exterior glass	Extra Clear
	Interlayer	EVA
	Interior glass	Clear or coated black
	Insulating glass	Not applicable
	Frame	On demand
Design	Min. size (mm)	400 x 400
	Max. size (mm)	4350 x 2250
	Standard size availability	No
	Min. Thickness (mm)	2 x 2
	Max. Thickness (mm)	2 x 12
	Transparency	0%
	Shapes	On demand
Specifications	Type of cell	High-performance PERC mono cells
	Typical power (Wp/m ²)	Max. 180
	Junction Box	Edge or back
	Typical cable length	2 x 1m
	Cell size (mm)	G1 (158,75mm) or M10 (182mm)
Certification and warranties	IEC certifications	Family certification per IEC 61215-IEC 61730
	Safety glazing	EN 356- P1A, EN 12600- 1B1 EN ISO 12543
	Product warranty	10 years
	Performance warranty	10 years- 90% nominal power/ 20 years- 80% nominal power

Composition ISSOL® Noctis



Applications

- | | |
|-----------|---------------|
| Facades | Roofs |
| Cladding | Balustrades |
| Spandrel | Louvres |
| Sunshades | Carports |
| Canopies | Noisebarriers |